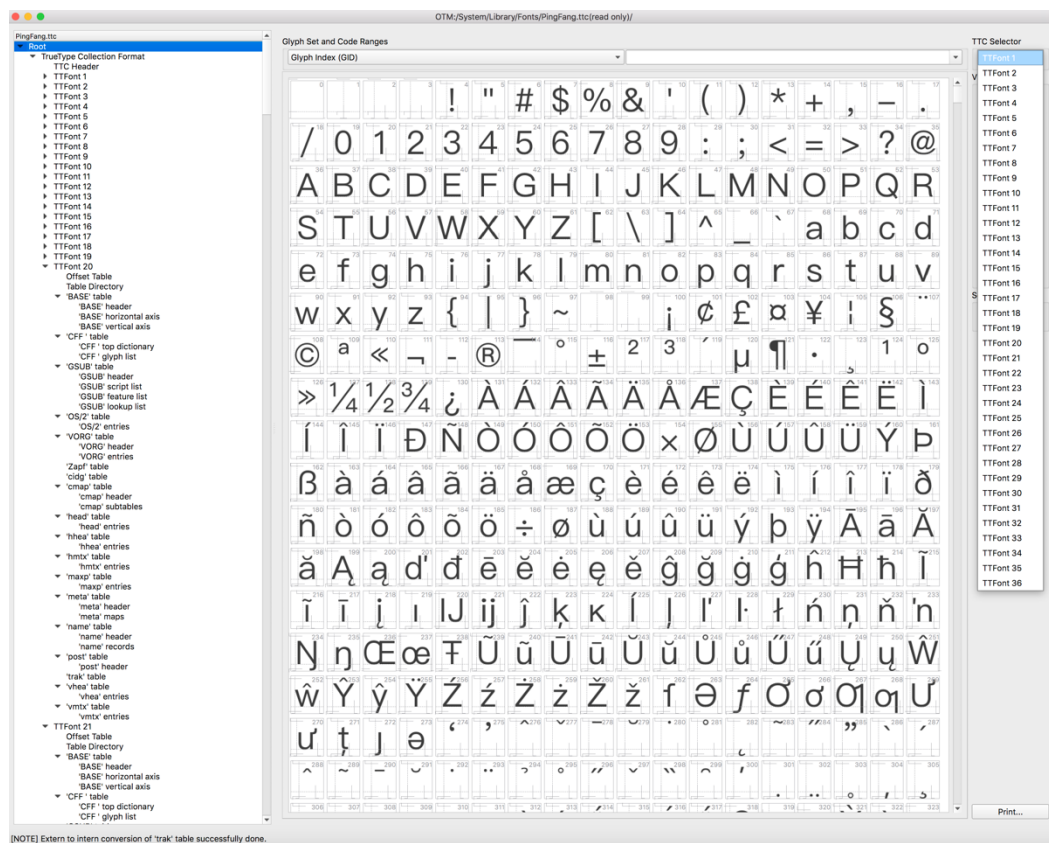


OTM 8.0 TrueType Collection Editor

TrueType Collection files (TTC) have been existing for a long time and have been used initially for Japanese fonts, which came in two versions: with proportional and with monospaced kanas. The idea behind TTC was to share tables between fonts and keep the data size as small as possible.

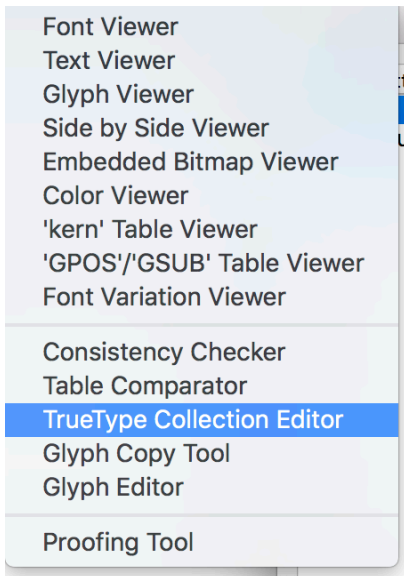
Recently TTC files became more visible and have been extensively used to reduce the file size for large CJK fonts. Adobe started to create CFF-based TTC files, also known as 'OpenType Collections'. Since handling one file for a whole family of fonts also is considerably simpler and more convenient, many font families in macOS are now delivered as TTC files –even the core typefaces such as Helvetica and Palatino. Here is a small collection of TTC fonts:

- HelveticaNeue macOS System 14 Fonts TTF 6.6 Mb
- PingFang macOS System 36 Fonts OTF 80 Mb
- SourceHanSans Adobe (Open Source) 28 Fonts OTF 130 Mb



If one opens a TTC file in OTM, every font in the collection will be opened as a complete TTF/OTF font. The tables which are shared, will be displayed as part of each font they belong to. Editing a table means that the modified table will be altered in the selected font and will not be shared any longer. OTM will compare all tables again at the end before saving the font and share only binary- identical tables. Editing a shared 'glyph' table will result in a large increase in file size when the collection is saved at the end.

In order to allow sharing of tables and also modifying tables for all fonts at the same time, we have introduced a TTC editing tool:



This will open a large window that will show all available tables. An 'x' indicates that this table exists and is the first version of its kind. In case this table is shared between different fonts this will be marked by a '=TTFont' if the first appearance of the table is in font 1 as one can see below:

OTM TrueType Collection Editor - PingFang.ttc (read only)

	TTFont 1	TTFont 2	TTFont 3	TTFont 4	TTFont 5	TTFont 6	TTFont 7	TTFont 8	TTFont 9	TTFont 10	TTFont 11	TTFont 12	TTFont 13	TTFont 14	TTFont 15	TTFont 16	TTFont 17	TTFont 18	TTFont 19	TTFont 20
BASE	x	= TTFont 1	= TTFont 1	= TTFont 1	= TTFont 1	= TTFont 1	= TTFont 1	= TTFont 1	= TTFont 1	= TTFont 1	= TTFont 1	= TTFont 1	= TTFont 1	= TTFont 1	= TTFont 1	= TTFont 1	= TTFont 1	= TTFont 1	= TTFont 1	= TTFont 1
CFF	x	= TTFont 1	= TTFont 1	x	= TTFont 4	= TTFont 4	x	= TTFont 7	= TTFont 7	x	= TTFont 10	= TTFont 10	x	= TTFont 13	= TTFont 13	x	= TTFont 16	= TTFont 16	= TTFont 1	= TTFont 1
GSUB	x	x	x	= TTFont 1	= TTFont 2	= TTFont 3	= TTFont 1	= TTFont 2	= TTFont 3	= TTFont 1	= TTFont 2	= TTFont 3	= TTFont 1	= TTFont 2	= TTFont 3	= TTFont 1	= TTFont 2	= TTFont 3	= TTFont 1	= TTFont 2
OS/2	x	= TTFont 1	x	x	= TTFont 4	x	x	= TTFont 7	x	x	= TTFont 10	x	x	= TTFont 13	x	x	= TTFont 16	x	= TTFont 1	= TTFont 1
VORG	x	= TTFont 1	= TTFont 1	x	= TTFont 4	= TTFont 4	x	= TTFont 7	= TTFont 7	x	= TTFont 10	= TTFont 10	x	= TTFont 13	= TTFont 13	x	= TTFont 16	= TTFont 16	= TTFont 1	= TTFont 1
Zapf	x	x	x	= TTFont 1	= TTFont 2	= TTFont 3	= TTFont 1	= TTFont 2	= TTFont 3	= TTFont 1	= TTFont 2	= TTFont 3	= TTFont 1	= TTFont 2	= TTFont 3	= TTFont 1	= TTFont 2	= TTFont 3	= TTFont 1	= TTFont 2
cidg	x	x	x	= TTFont 1	= TTFont 2	= TTFont 3	= TTFont 1	= TTFont 2	= TTFont 3	= TTFont 1	= TTFont 2	= TTFont 3	= TTFont 1	= TTFont 2	= TTFont 3	= TTFont 1	= TTFont 2	= TTFont 3	= TTFont 1	= TTFont 2
cmap	x	x	x	= TTFont 1	= TTFont 2	= TTFont 3	= TTFont 1	= TTFont 2	= TTFont 3	= TTFont 1	= TTFont 2	= TTFont 3	= TTFont 1	= TTFont 2	= TTFont 3	= TTFont 1	= TTFont 2	= TTFont 3	= TTFont 1	= TTFont 2
head	x	x	x	x	x	x	x	x	x	x	x	x	x	x	x	x	x	x	x	x
hhea	x	= TTFont 1	= TTFont 1	x	= TTFont 4	= TTFont 4	x	= TTFont 7	= TTFont 7	x	= TTFont 10	= TTFont 10	x	= TTFont 13	= TTFont 13	x	= TTFont 16	= TTFont 16	x	= TTFont 19
hmtx	x	= TTFont 1	= TTFont 1	x	= TTFont 4	= TTFont 4	x	= TTFont 7	= TTFont 7	x	= TTFont 10	= TTFont 10	x	= TTFont 13	= TTFont 13	x	= TTFont 16	= TTFont 16	= TTFont 1	= TTFont 1
maxp	x	= TTFont 1	= TTFont 1	= TTFont 1	= TTFont 1	= TTFont 1	= TTFont 1	= TTFont 1	= TTFont 1	= TTFont 1	= TTFont 1	= TTFont 1	= TTFont 1	= TTFont 1	= TTFont 1	= TTFont 1	= TTFont 1	= TTFont 1	= TTFont 1	= TTFont 1
meta	x	x	x	x	x	x	x	x	x	x	x	x	x	x	x	x	x	x	x	x
name	x	x	x	x	x	x	x	x	x	x	x	x	x	x	x	x	x	x	x	x
post	x	= TTFont 1	= TTFont 1	x	= TTFont 4	= TTFont 4	x	= TTFont 7	= TTFont 7	x	= TTFont 10	= TTFont 10	x	= TTFont 13	= TTFont 13	x	= TTFont 16	= TTFont 16	= TTFont 1	= TTFont 1
trak	x	= TTFont 1	= TTFont 1	= TTFont 1	= TTFont 1	= TTFont 1	= TTFont 1	= TTFont 1	= TTFont 1	= TTFont 1	= TTFont 1	= TTFont 1	= TTFont 1	= TTFont 1	= TTFont 1	= TTFont 1	= TTFont 1	= TTFont 1	= TTFont 1	= TTFont 1
vhea	x	= TTFont 1	= TTFont 1	= TTFont 1	= TTFont 1	= TTFont 1	= TTFont 1	= TTFont 1	= TTFont 1	= TTFont 1	= TTFont 1	= TTFont 1	= TTFont 1	= TTFont 1	= TTFont 1	= TTFont 1	= TTFont 1	= TTFont 1	= TTFont 1	= TTFont 1
vertx	x	= TTFont 1	= TTFont 1	x	= TTFont 4	= TTFont 4	x	= TTFont 7	= TTFont 7	x	= TTFont 10	= TTFont 10	x	= TTFont 13	= TTFont 13	x	= TTFont 16	= TTFont 16	= TTFont 1	= TTFont 1

Reset Apply Autoset New ... Insert ... Duplicate Remove Export ... Save Close

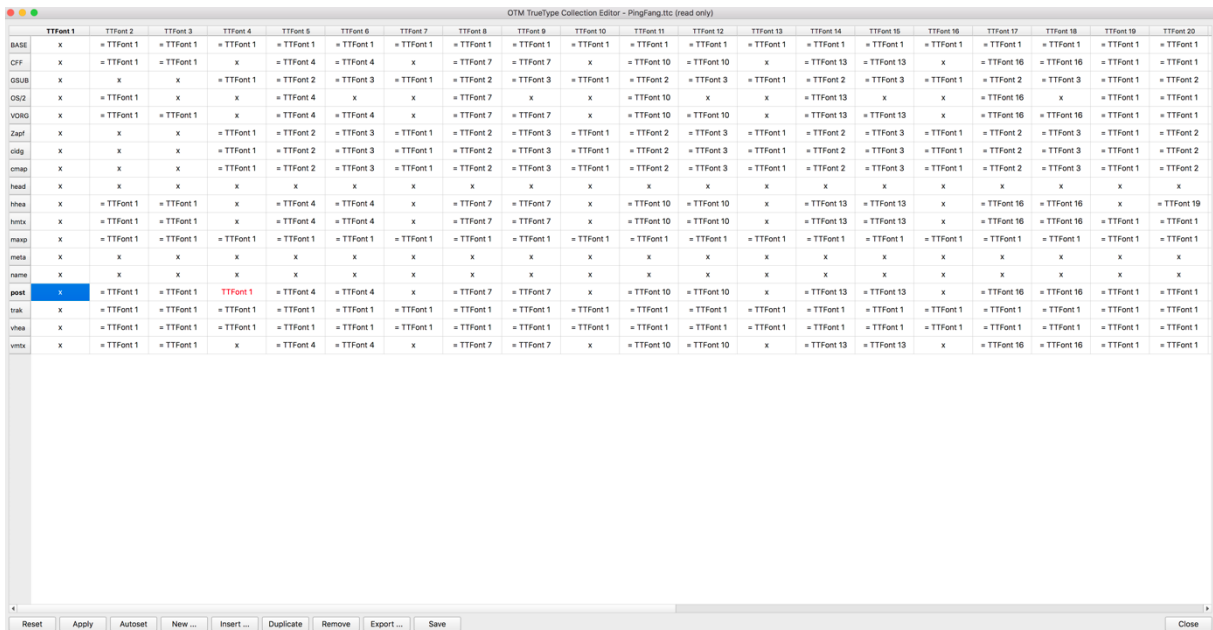
The buttons below left are options to edit the TTC tables and explained in the following paragraph.

The TTC editing functions allow to create and modify a new or an existing TTC file, as well as to extract a TTF/OTF file from a TrueType collection:

1. 'Reset' Resets everything to the origin.
2. 'Apply' Applies the changes to the TTC file.
3. 'Autoset' If one table is changed this function will modify all instances of this table.
4. 'New' Creates a new empty TTC file.
5. 'Insert' Insert an arbitrary TTF/OTF font into the TTC file.
6. 'Duplicate' Duplicate a TTF/OTF font inside a TTC file.
7. 'Remove' Remove a TTF/OTF font in a TTC file.
8. 'Export' Exports a single TTF/OTF file.
9. 'Save' Saves all changes.

Besides these management functions, the user can also edit an existing TTC font by copying tables from one font to another:

For this one can select an arbitrary table in the window and use drag and drop to overwrite the same table in another font. Of course, this requires some knowledge which tables are depending on each other, and it is very easy to mess up the TTC collection completely!

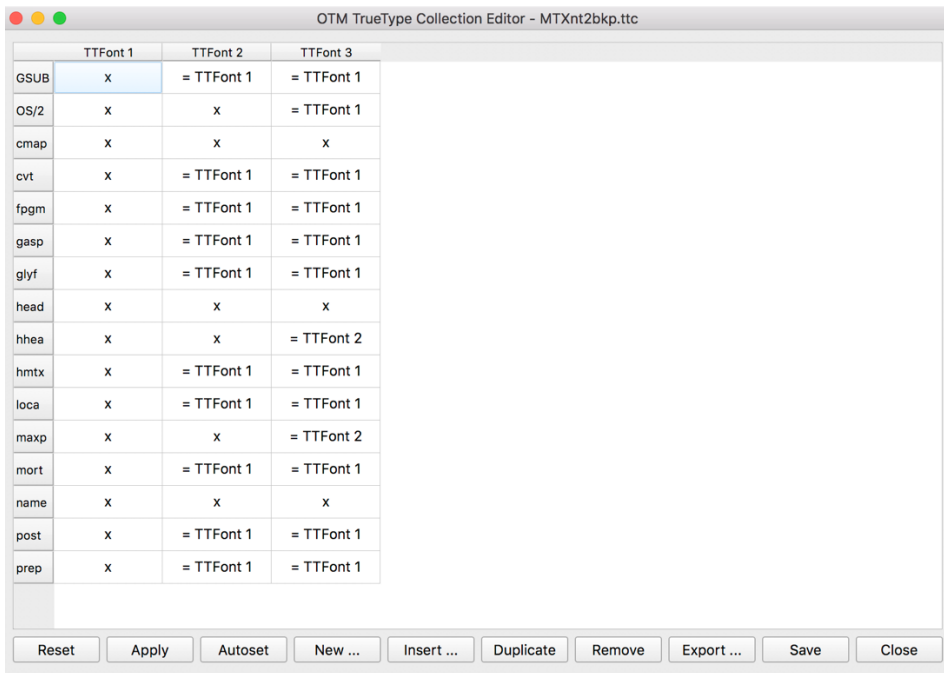


Here the 'post' table from font 1 has been selected and dragged it to font 4, overwriting the existing 'post' table. The modified table is indicated in red. Clicking on the 'Apply' button will change the TTC file. This is just a theoretical example to show how the editing of the tables can be operated. Other, perhaps more useful examples follow next.

Example 1: To modify an existing TTC font (adding glyphs to an existing TTC).

We start from an existing TTC file and want to add one glyph to a particular font. The workflow is then as follows:

- Open the TTC font.
- The TTC font shares the glyph table between three fonts.

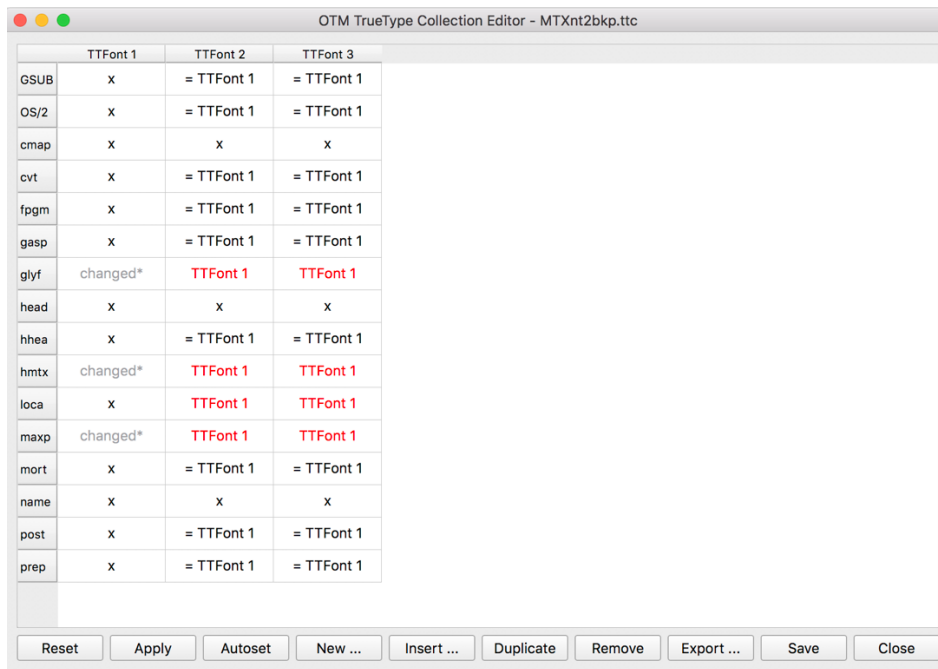


- As a next step, add a new glyph for font 1 to the glyph table:



The TTC editor will indicate which tables have been changed ('glyf', 'hmtx', 'maxp').

Pressing the 'Autoset' button will make these identical for all 3 fonts again:



	TTFont 1	TTFont 2	TTFont 3
GSUB	x	= TTFont 1	= TTFont 1
OS/2	x	= TTFont 1	= TTFont 1
cmap	x	x	x
cvt	x	= TTFont 1	= TTFont 1
fpgm	x	= TTFont 1	= TTFont 1
gasp	x	= TTFont 1	= TTFont 1
glyf	changed*	TTFont 1	TTFont 1
head	x	x	x
hhea	x	= TTFont 1	= TTFont 1
hmtx	changed*	TTFont 1	TTFont 1
loca	x	TTFont 1	TTFont 1
maxp	changed*	TTFont 1	TTFont 1
mort	x	= TTFont 1	= TTFont 1
name	x	x	x
post	x	= TTFont 1	= TTFont 1
prep	x	= TTFont 1	= TTFont 1

Reset Apply Autoset New ... Insert ... Duplicate Remove Export ... Save Close

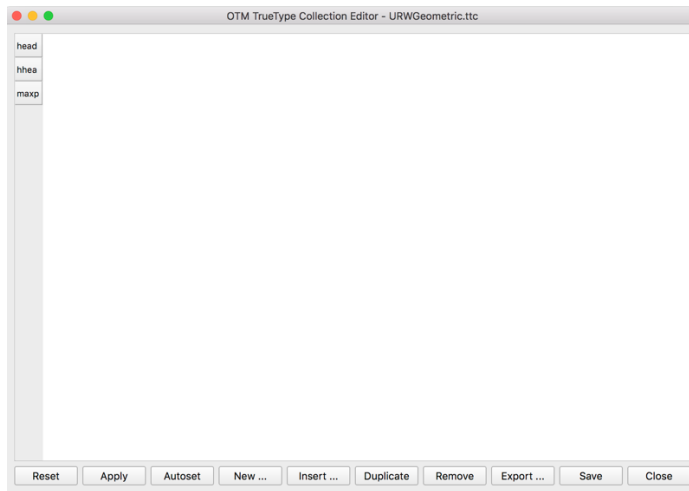
As one can see, the 'loca' table (which is connected to the 'glyph' table) will be updated too.

Saving this font ensures that the $\pi\tau\epsilon$ file will not get bigger and still shares all tables as the original one.

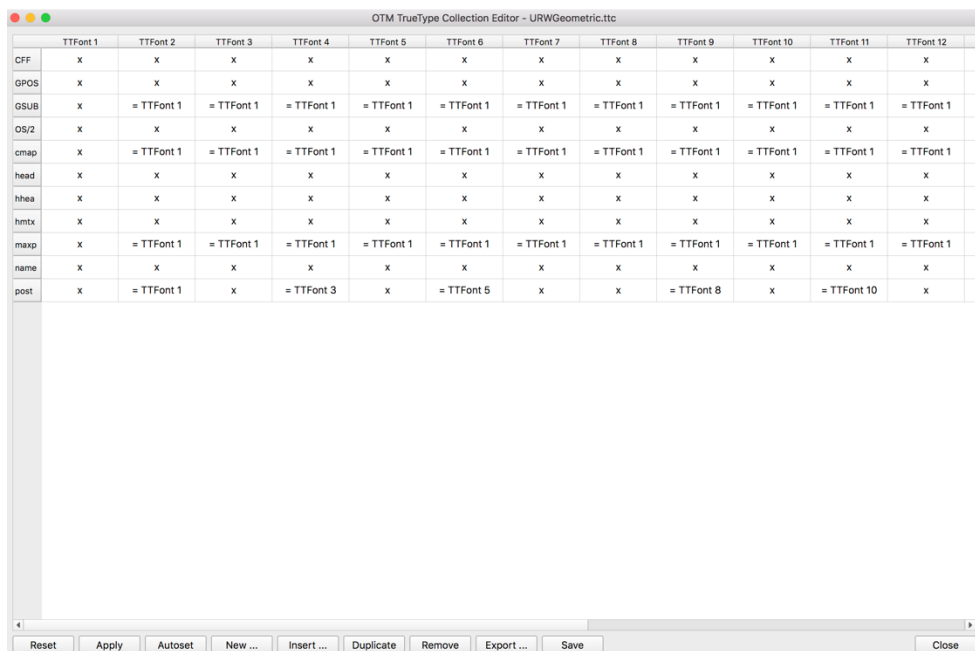
Example 2: Creating a new TTC font.

As an example, a TTC/OTC file from the URW Geometric family has been created via:

- Open OTM.
- Open the 'TrueType Collection Editor'.
- Click on 'New...' and create an empty TTC file.



- Select insert and select the OTF or TTF fonts you want to include from the open dialogue. Here 20 fonts from the font family have been selected: the first 12 are indicated below, the other ones become visible with the scroll button.



The 'gsub', 'cmap', and 'maxp' tables are all identical and shared automatically.